

## DARK COATED CLADDING

Generally problems occur with dark coatings on wooden cladding, due to shrink and swell being exasperated by the solar gain, especially in high UV-regions across the globe. Accoya® wood's superior dimensional stability negates this problem and maintenance intervals are dramatically extended.

Dark of black coated Accoya cladding boards have been a popular choice with architects world-wide, with several coating brands. These projects have been performing in time without the issues usually associated with other wood species.

## ABOUT ACCOYA®

Accoya is the world's leading high technology wood. It is produced from sustainably sourced, fast growing softwood using a non-toxic modification process from the surface to the core. The result is a durable, stable and beautiful material with the performance characteristics of the most durable tropical hardwoods but with industry-leading environmental credentials.

A new world of sustainable and low maintenance products including windows, doors, decking and cladding is available using Accoya. The exceptional durability provides for a minimum 50 year above ground and 25 year in-ground life.

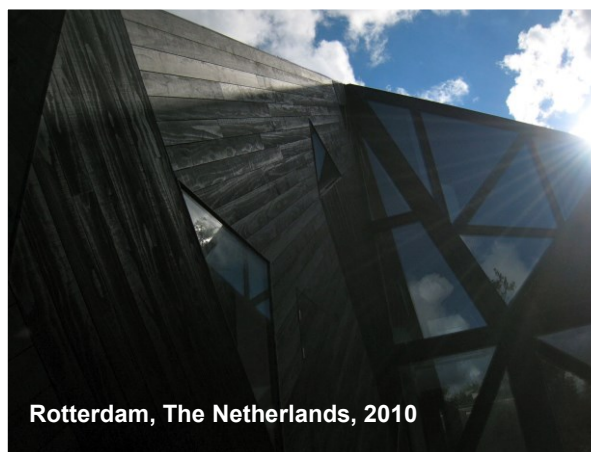


New Zealand, May 2013

The following pages give examples of Accoya cladding projects with a very dark or black coating. For more detailed information on these projects, please contact your sales office.



The Netherlands, January 2010



Rotterdam, The Netherlands, 2010

Version 01.16.01 – this document has been written for professionals wishing to use Accoya to create beautiful, reliable and highly durable end products. Should you require further information or have any comments about this document, please contact Accsys through [www.accoya.com](http://www.accoya.com).

## 42-MONTH EXTERNAL COATINGS TEST – BM TRADA

Leading timber research institute, BM Trada, was commissioned by Accsys Technologies to perform a series of exposure trials with a black coated surface.

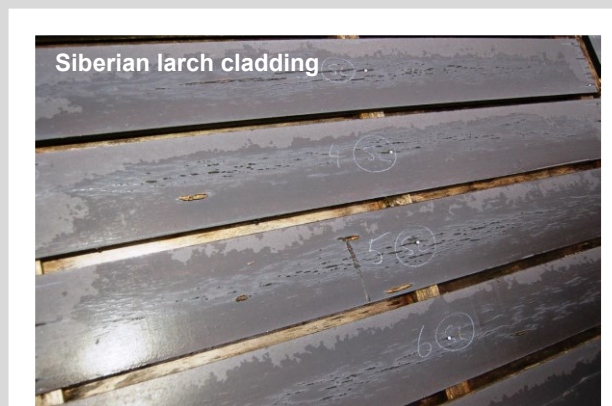
The ongoing trials using the same (black) coating began in February 2007 in Buckinghamshire, England and tested Accoya cladding board's resistance to natural weathering and splitting in comparison to Pine and Siberian larch.

After 42-months, Accoya wood was found to outperform the competing cladding boards in a number of ways – showing excellent coating performance.

Pine cladding boards showed severe levels of fissuring, resin exudation, end fissuring, paint peeling over fissures, shelling, surface checking and board distortion; whilst Siberian larch was found to have extensive surface checking and burst resin pockets.

Accoya wood, however, had a flat cladding surface with no grain raising, virtually no shelling, cracking, checking or fissuring. External dirt was easily cleaned off revealing a sound clean surface with no rot, decay or coating issues.

This test, using a translucent black coating for maximum radiant heat build is a particularly difficult situation for wood products. The results have provided the confidence to recommend Accoya with black coatings around the world, including Australia - with positive real world results.







## RECYCLING CENTRE (NL)

Project : Onder Driehoeken Recycling Centre in Veenendaal, The Netherlands

Date : August 2011

Finish : Fine sawn Accoya with 3 layers of Sansin black stain (the first two applied industrially and one layer on site)



## VISITOR CENTRE (USA)

Project : Dogwood Canyon Audubon Centre in Cedar Hill, Texas

Date : 2012

Finish : Rough Accoya ('as is') with Sherwin Williams black stain





## PRIVATE HOUSE (AUS)

Project : Invermay Grove in Melbourne, Australia

Date : 2011

Finish : Smooth planed Accoya with Cetol HLS dark brown stain

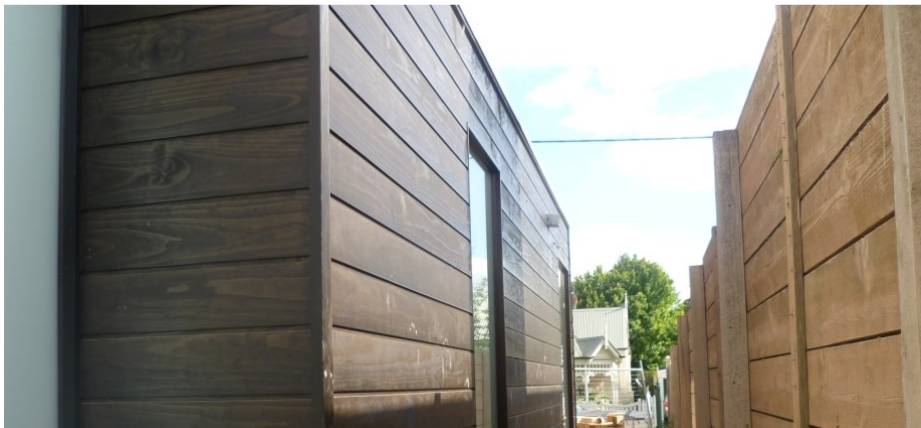


## CHURCH (NL)

Project : Church for the Apostolic Society in The Hague, The Netherlands

Date : January 2010

Finish : Fine sawn Accoya with Sansin black stain







## SCHOOL (UK)

Project : Netley Primary School in London, United Kingdom

Date : 2014

Finish : Accoya with Sikken's primer WP567 and top coat WF791



## PRIVATE HOUSE (NZ)

Project : New Zealand

Date : May 2013

Finish : Accoya with Woca black stain







## PRIVATE HOUSE (AUS)

Project : Australia

Date : 2011

Finish : Smooth planed Accoya with Sikkens Cetol black opaque coating



## PRIVATE HOUSE (NL)

Project : Ooze Villa in Rotterdam, The Netherlands

Date : 2010

Finish : Rough cut Accoya with Sansin black stain

